

Lightning Talk 4: Project Planning

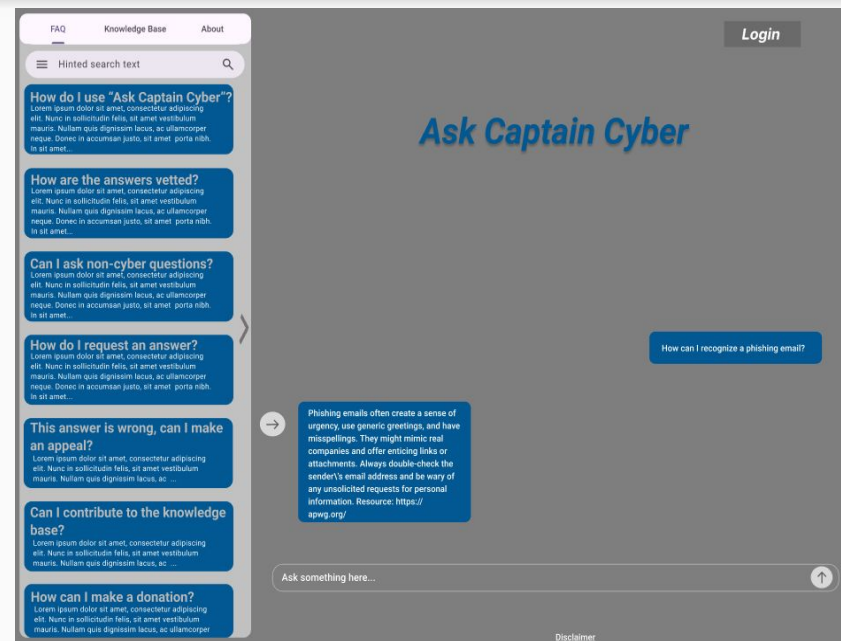
Ask Captain Cyber

SD Team #07

Project Overview

What is “Ask Captain Cyber”?

- ★ A cybersecurity focused website that uses AI and cybersecurity experts to answer questions from the general population
- ★ Users can “chat” with Captain Cyber and receive answers that have been vetted by a team of ambassadors
- ★ Allows people with little prior knowledge to have their questions answered in simple terminology

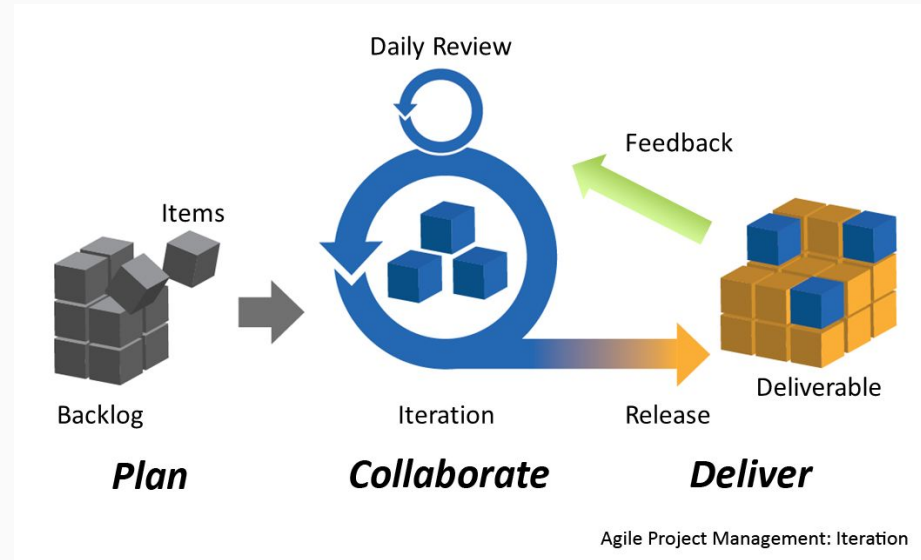


Figma mockup of “Ask Captain Cyber”

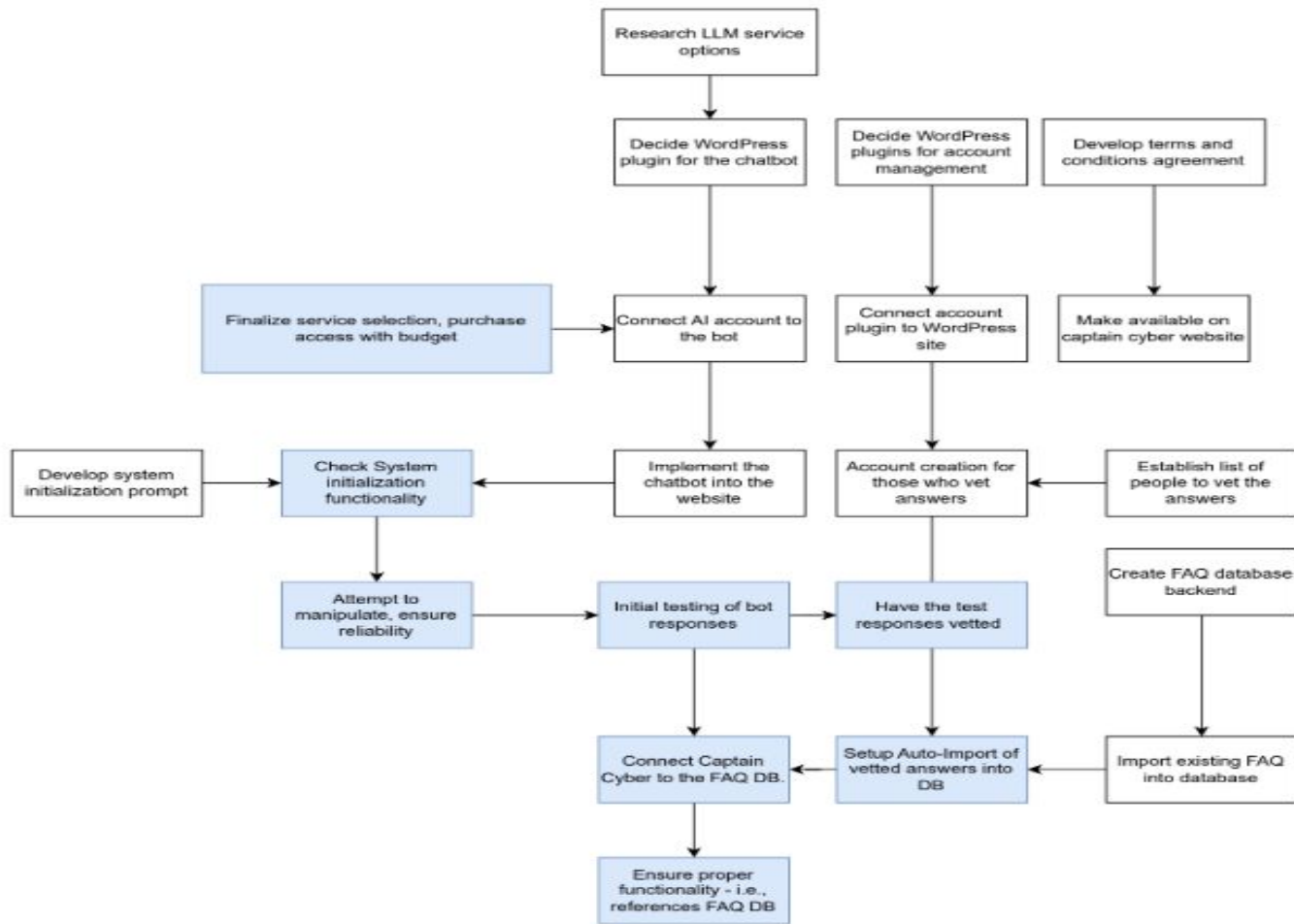
Project Management Style

Waterfall/Agile Hybrid

- Similar to Agile
 - Collaboration
 - Efficiency
 - Continuous improvement
- Less frequent meetings
 - Weekly with team
 - Monthly with advisor



Task



Key Milestones, Metrics, and Evaluation Criteria

Milestones	Metrics	Evaluation Criteria
1. Server Testing a. 10/24 - 11/15	1. 50 to 100 questions already vetted and ready to be used	1. Consistent chat responses, accurate to our ideal interaction
2. Frontend Development a. 10/25 - 11/26	2. Login system ready for experts to work on backend	2. Intuitive website with landing, FAQ, Terms and Conditions, and Chat pages
3. User Study a. 10/31 - 11/23	3. Consistently engineered prompt to initialize AI Chat bot	3. Quick communication between frontend and backend, assuring prompt response time
4. Prototype Finalization a. 11/18 - 12/18		

Key Risks and Mitigation Strategies

Risks	Mitigations
Irrelevant or inappropriate data prompts inputted into the AI.	Sanitize AI data input with the proper constraints and Ambassador output.
Unhashed critical private user information.	Good data storage policy and follow current Hashing and Encryption Standards.
SQL and Script Injections	Data sanitation implementation for the Login/Sign-up page

Conclusions

- Ask Captain Cyber is a project that allows us to utilize the key aspects of the Agile and Waterfall management style.
- We have a flexible timeline and a large range of freedom with Ask Captain Cyber according to our advisor.
- We have thought of key risks and management strategies for a wide variety of potential problems.